

INVO PD-015 Solar Powered LED Bollard

The INVO PD-015 solar powered LED bollard is an incredible blend of aesthetics and functionality, bridging the gap between domestic and commercial bollards with its high specifications. This remarkable outdoor lighting solution not only adds a touch of elegance to any landscape but also offers exceptional performance. With its sleek and modern design, it seamlessly integrates into residential areas, parks, pathways, and commercial spaces alike. What sets the PD-015 apart is its commercial-grade specifications, ensuring unparalleled durability and reliability. Equipped with powerful solar panels, it harnesses the sun's energy to provide bright, consistent illumination throughout the night. Its robust construction and weather-resistant features make it suitable for even the harshest outdoor environments. The INVO PD-015 solar powered LED bollard truly embodies the perfect synergy between style and functionality, enhancing the ambiance and safety of any outdoor area.

LIGHTING

Nominal flux	250 Lumens
Nominal Power	1.8 Watts
Efficiency	120 Lumens / Watts
Chips LED	Philips Luxeon 30-30
LED Lifetime	Over 80,000 hours LM80
Optics & CCT	T V / 2300 to 6500K (Dual CCT optional)
Light Height	110 cm

BATTERY

Technology	Lithium Iron Phosphate LIFEP04
Capacity	28 Wh
Autonomy	Over 24 hours at full charge - 4 rainy days back up
Charging Time	6 hours
Lifespan	Over 3000 Cycles @ 80% DOD over 10 years lifetime
Working Temp	-10°C to 70°C (Optional -40°C to 70°C)

ENERGY

Solar Panel	4.5 Wc
Cells Type	Monocrystalline Panel Grade A 25 years
Certificates	IEC 61215 - IEC 61730 I and II - IEC 60904

ELECTRONIC

Sensor	PIR 180° Sensor (optional)
---------------	----------------------------

DIMENSIONS

Product	25(D)cm x 110(H)cm
Carton Size	115cm x 32cm x 33cm
Weight	6.8 kg
Material	Die Cast Aluminium
Installation	Concrete base or insert on support



CERTIFICATIONS

IEC / TUV / EMC / LM-79- 08 and LM-80 test standards / IK8 / IP65 / CE / ULOR

*Procure Direct offers a 5 Year Limited Warranty for the Post Top-Series luminaire shall be free from defects in material and workmanship for up to five (5) years from date of shipment. This limited warranty covers all components when installed and operated according to PD instructions. Fixture suitable for ambient temperature from -10° to 50°. PV Panels: 20 year performance warranty. Controller & Batteries: 5 years

LUMINAIRE HOUSING & LEDS

250 LUMENS

The PD-015 bollard incorporates the latest LED technologies, its elegance and ease of installation will meet your lighting needs. PD-015 is equipped with LED chips, combining performance and robustness with 120 lumens per watt.

Our light fixture also complies with current standards concerning light pollution.



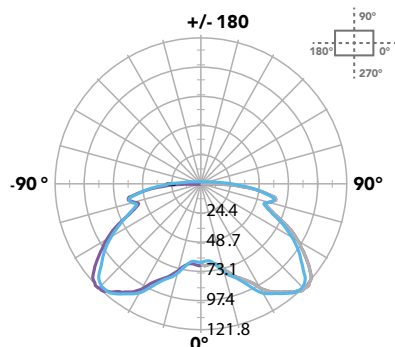
SYMMETRICAL LIGHT DISTRIBUTION

LIGHT DISTRIBUTION

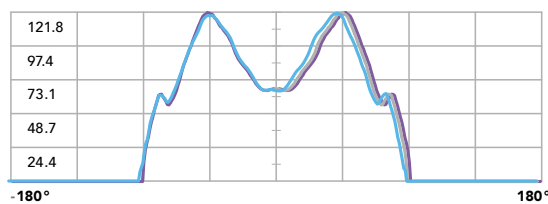
SYMMETRICAL

LIGHT DISTRIBUTION CURVES

LIGHT DISTRIBUTION CURVE
UNIT : CD



LIGHT DISTRIBUTION CURVE
LINEAR



CD C0/C180 — C90/C270 — C0 —

BATTERY LIFEPO4

+ OVER 10 YEARS LIFETIME

The PD-015 bollard is equipped with Lithium Iron Phosphate LIFEP04 batteries, recognised as the best battery technology in terms of longevity, safety, and performance for solar applications. Our batteries enjoy a lifespan of over 3000 cycles, which is more than 10 years at 80% DOD.



EXTREME TEMPERATURE

-10 °C TO 70 °C (-40 °C OPTIONAL)

Most suppliers offer a standard Lithium LiFePo4 batteries with a working temperature range from -10°C TO 70 °C. However, upon request we can offer a new special LIFEP04 battery, with working range of -40 °C. to 70 °C.

BMS ELECTRONIC PROTECTION BATTERY MANAGEMENT SYSTEM

Our batteries are equipped with **electronic circuit boards for a higher protection**, ensuring battery function optimisation no matter what the situation.



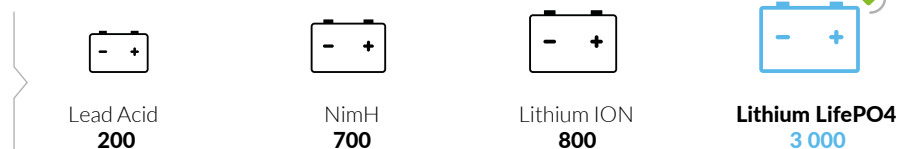
The BMS Protects against :

- OVER/UNDER CURRENT
- OVERLOAD
- OVER/UNDER VOLTAGE
- OVER/UNDER CHARGE
- TEMPERATURE MANAGEMENT

COMPARISONS OF DIFFERENT BATTERY TECHNOLOGIES

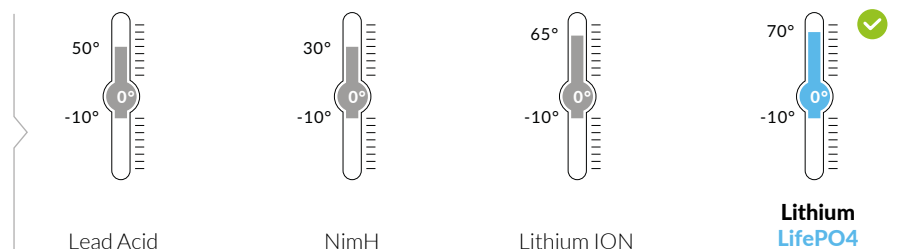
LIFETIME & CYCLES AT 80% DOD*

Comparisons of different battery technologies



CHARGING TEMPERATURE RANGE WITHOUT CAPACITY LOSS

Minimum & Maximum temperature range for Optimal charging during the day

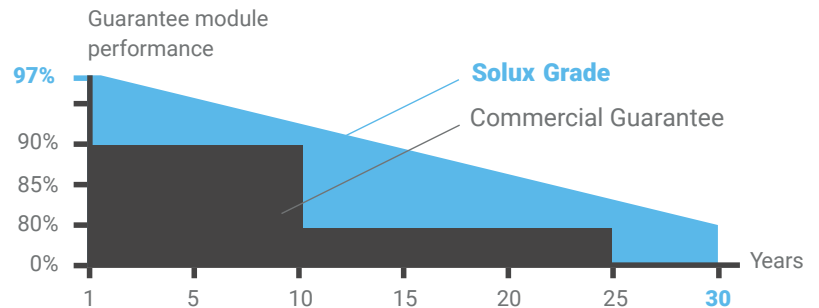


SOLAR PANEL

4.5 WATTS

Encapsulated Monocrystalline Solar Panel Grade A Solar Cell with Tempered Glass.

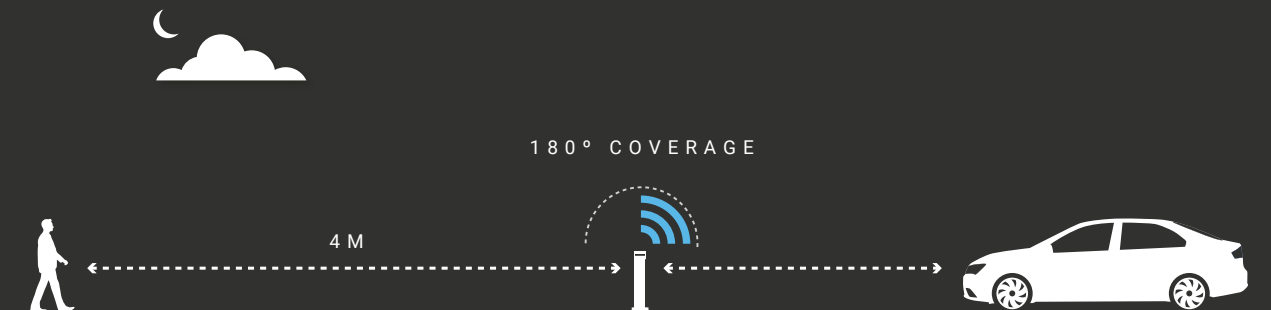
OUR PV PERFORMANCE GUARANTEE



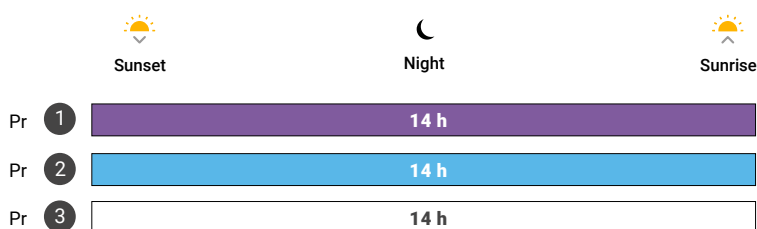
MOTION SENSOR

OPTIONAL PIR INFRA-RED MOTION SENSOR

The PD-015 bollard optional PIR motion sensor, automatically turns on at dusk and off at dawn. The infra-red detector integrated into the light fixture will increase the light power as pedestrians or vehicles pass, thus providing a higher level of safety while respecting the environment.



OPERATION MODE & LIGHTING SCHEDULE



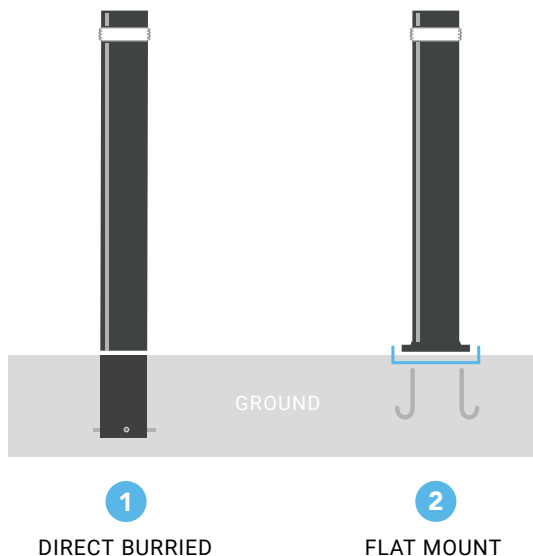
Depending on the geographical area, we will select the % of light reduction.

- Program 1 > 40% Dim + 100% ON during 20 sec
- Program 2 > 30% Dim + 100% ON during 20 sec
- Program 3 > 20% Dim + 100% ON during 20 sec

EASY INSTALLATION

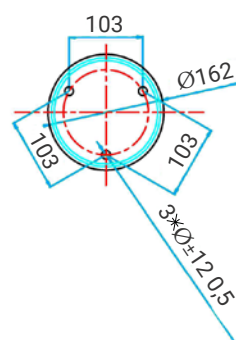
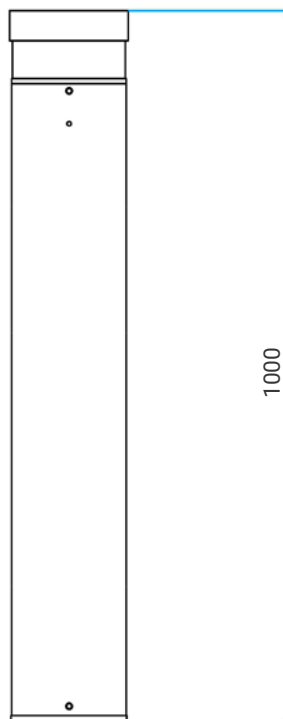
NO CABLING, NO TRENCHING

The PD-015 comes in two different mounting types, neither require trenching or cabling for a fast and economical installation. Simply insert the bollard into concrete or mount it on anchor rods.



DIMENSIONS

BOLLARD AND BASE



For more information, or to book your FREE audit,
 call us on 01522 538212, email info@procuredirect.co.uk
 or visit us at www.procuredirect.co.uk